



ELECTRONICS Fume Extraction Solutions

V 600

Volume

Centralised **fume extraction** system
for lead free **solder applications.**

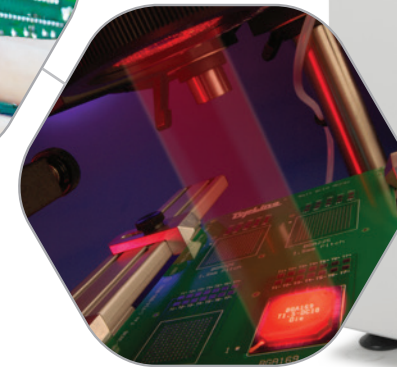
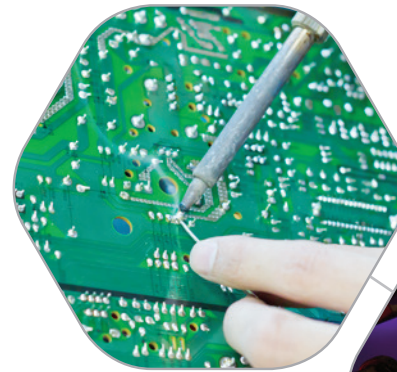
BOFA's high end range of extraction systems combine large filter capacity with high airflows and pressure. The V600 high volume extraction system offers protection against harmful fumes. This unit incorporates 3 stage filtration, filter condition display, and built in silencing. A truly state of the art fume purification solution.

STANDARD FEATURES:

- Blower with high airflow and pressure
- 3 stage filtration
- Digital speed control
- DeepPleat pre filter
- Filter condition display
- Built in silencing
- Long life filters with low replacement costs

OPTIONAL FEATURES:

- Remote stop / start interface
- Filter change / System fail signal



Powder Coated

TECHNOLOGY:



DeepPleat filter technology



HEPA Filter technology



Advanced Carbon Filter technology



Reverse Flow Air technology



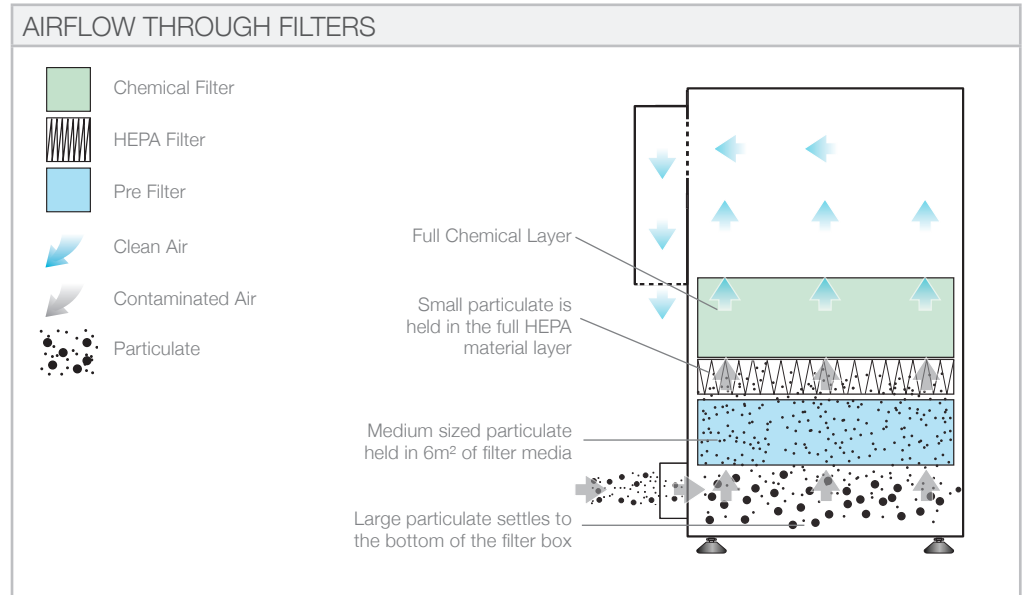
SureCheck Quality Standard



DeepPleat pre filter and
Combined HEPA/chemical filter

Back

TECHNICAL DATA		
	EU	US
Dimensions (HxWxD)	590 x 375 x 415mm	23.2 x 14.8 x 16.3"
Cabinet construction	Powder coated mild steel	
Airflow / pressure	350m ³ /hr / 96mbar	206cfm / 96mbar
Electrical data	90-257v 1ph 50/60Hz Full load current: 12.5 amps / 1.1kw	
Noise level	< 60dBA (at typical operating speed)	
Weight	35kgs	77lbs
Approvals	CE	



DEEPPLEAT PRE FILTER SPECIFICATIONS

Surface Media Area	6m ² approx
Filter Media	Glass Fibre
Filter Media Construction	Folded
Filter Efficiency	F8 (95% @ 0.9 microns)

COMBINED FILTER SPECIFICATIONS

HEPA Filter Media	Glass Fibre
HEPA Media Construction	Maxi Pleat Construction with Webbing Spacers
Gas Filter	Treated Activated Carbon
Filter Housing	Zintec Mild Steel
Treated Activated Carbon	7.5kgs
Filter Efficiency	99.997% @ 0.3 microns

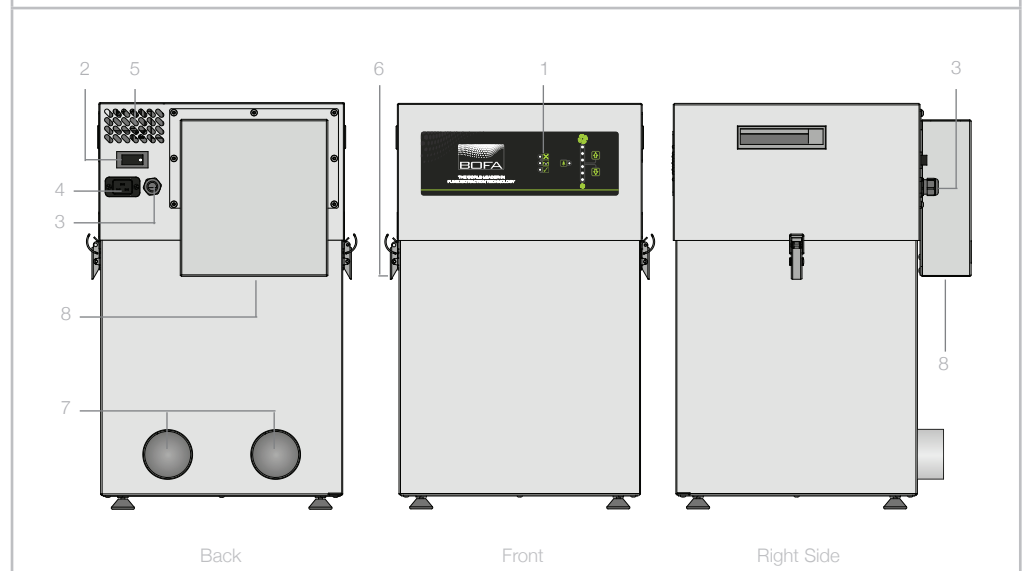
SPECIFICATIONS

Maximum number of 32mm Arms	7
Maximum number of 50mm Arms, Cowls or Down Draft Trays	5
Maximum number of 75mm Arms, Cowls or Down Draft Trays	2

Other hose kits and filters are available. All of the above units are fitted with our standard filter combinations. For specific applications please call us for details. Replacement filters should always be ordered using the part number on the filters inside your extractor to ensure the correct filter is ordered. Datasheet correct at time of print.

TECHNICAL SPECIFICATION

1 Filter Condition Display	5 Motor Cooling Inlet
2 On / Off Switch	6 Filter Latch
3 Signal / Interface Cable	7 Hose Inlet Connection - 75mm (x2)
4 Power Cable Inlet	8 Exhaust Outlet



1. UNIT PART NUMBERS						
Model	Voltage	24V Stop/Start with Override	Filter Condition Signal	Remote Speed Control	VOC Sensor	Part Number
V 600 Powder Coated	90-257V					E1142A0000
					✓	E1142A0002
		✓	✓			E1142A0003
		✓	✓		✓	E1142A0004
					✓	E1142A0010

2. HOSE KIT - ONE PER BENCH NEEDED IF ORDERING FROM MENU 3			
Letter Reference	Description	Main Items	Part Number
A	Hose kit to connect each bench for 50mm arm/accessory.	50mm to 75mm 'T' piece 75mm x 2.5m flexible hose 1m x 50mm flexible hose	A1020376
B	Hose kit to connect each bench for 75mm arm/accessory.	75mm 'T' piece 2 x 75mm x 2.5m flexible hose	A1020375

3. ARM ACCESSORIES			
Used with Hose Kit Ref	Number Reference	Description	Part Number
50MM ACCESSORIES			
A (50mm)	1	32mm ESD Stay Put Arm with Funnel	A1020044
	2	32mm ESD Stay Put Arm with Nozzle	A1020046
	3	50mm ESD Stay Put Arm with Funnel	A1020045
	4	50mm ESD Stay Put Arm with Nozzle	A1020047
	5	50mm ESD Stay Put Arm with Slot	A1020049
	6	38mm Stainless Steel ESD Stay Put Arm with Nozzle	A1020160
	7	38mm Stainless Steel ESD Stay Put Arm with Funnel	A1020184
	8	50mm ESD Stay Put Arm with Plenum Funnel	A1020179
	9	Light Arm - White	A1020168
	10	Light Arm - Black	A1020169
75MM ACCESSORIES			
B (75mm)	11	75mm ESD Stay Put Arm 1m with Funnel	A1020042
	12	75mm ESD Cowl (Black)	A1020039
	13	75mm Clear Cowl	A1020038
	14	75mm ESD Down Draft Tray	A1020041

50MM HOSE KIT	50MM ACCESSORIES	
	1 / 3	2 / 4
	5	6
	7	8
	9	10
	75MM HOSE KIT	
	11	12/13
		14

REPLACEMENT FILTERS	
Description	Part Number
DeepPleat Pre Filter	A1030119
Combined Filter	A1030118

V600:12/9/16 V:2.6



BOFA INTERNATIONAL LTD

Tel: +44 (0) 1202 699 444 Fax: +44 (0) 1202 699 446 Email: sales@bofa.co.uk Web: www.bofa.co.uk

BOFA AMERICAS, INC

Tel: (618) 205 5007 Fax: (866) 707 2632 Email: sales@bofaamericas.com Web: www.bofaamericas.com

