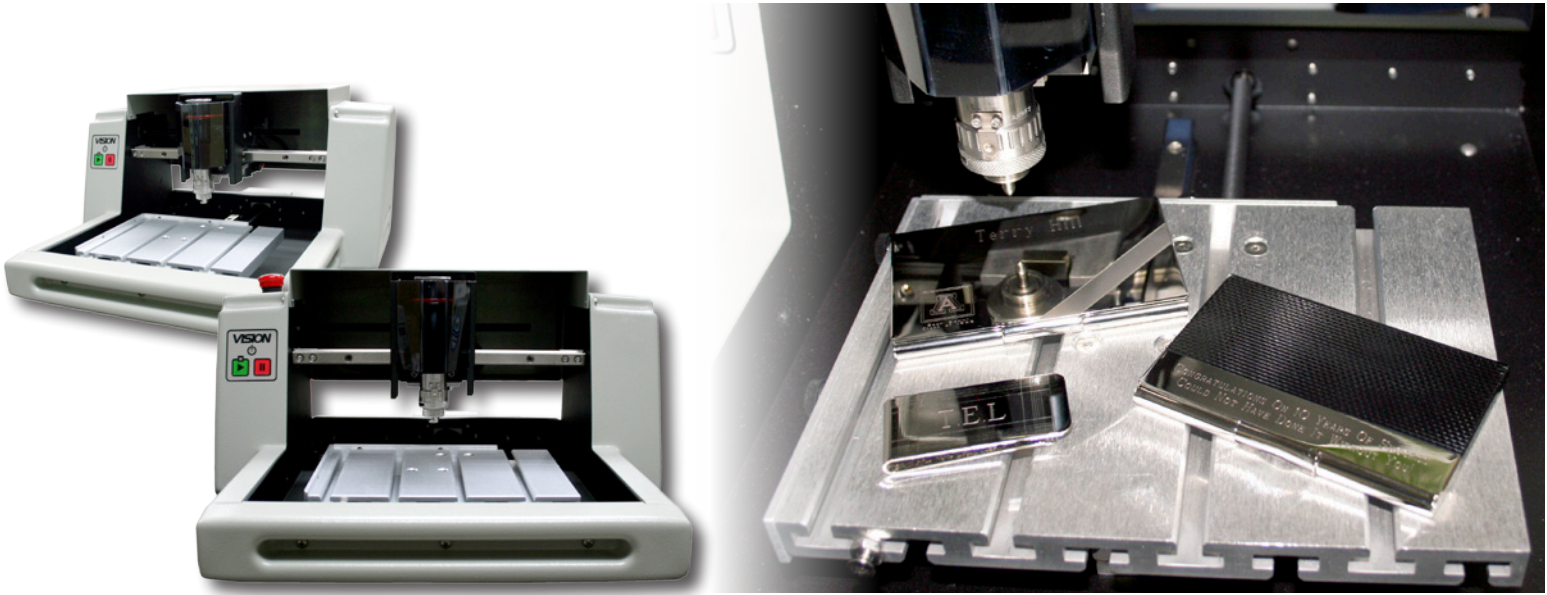


# Express Engraver

**VISION**  
ENGRAVING & ROUTING SYSTEMS  
A Company of Western Engravers Supply, Inc.



## Vision Quality at an Affordable Price!

Introducing a small format engraving machine, the Vision Express. The Vision Express engraver provides a 6" x 8" engraving area, and has a small footprint of only 17.5" x 17.5". The Express is an affordable, entry level engraving machine, ideal for engraving many items made from metal, acrylic, brass, wood, or plastic. The easy to use Vision Express engraver comes complete with an advanced integrated controller to provide fast high quality engraving at an affordable price.

### The Express Offers:

- Square linear bearings on all axes
- 3"/second maximum feed rate
- Heavy-duty aluminum t-slot table
- Adjustable edge guides
- 11/64" spindle
- Ethernet connection

Start increasing your productivity and profits now -- call us today!

**1-888-637-1737 or 602-439-0600**



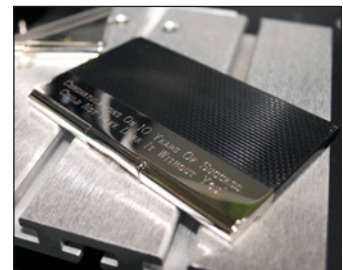
Serialization



Plastic Tags



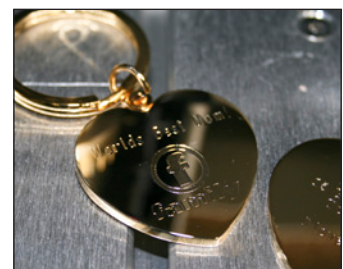
Key Engraving



Gift Engraving



Pens



Key Chains

Vision Engraving & Routing Systems • 17621 North Black Canyon Highway • Phoenix, AZ 85023  
Toll Free: 888-637-1737 • Tel: 602-439-0600 • [www.visionengravers.com](http://www.visionengravers.com)

# Express Engraver

**VISION**  
ENGRAVING & ROUTING SYSTEMS  
A Company of Western Engravers Supply, Inc.



## Why Choose Vision?

- Leading worldwide manufacturer of engravers and routers
- Made in the USA since 1983
- High-quality, reliable products
- Dedicated technical support

### Vision Express Engraver Specifications Chart

Software	Vision Express (Vision Expert or PRO optional)
MAX. Work Area	6" x 8"
MAX. Work Piece Clearance	8" x any length
Z-Axis Stroke	1.25"
Spindle Type	1 1/64" Top Load
Spindle Motor Power	1/7 HP
Resolution / Speed	0.0002"/ 3" sec max
Table Type	Aluminum T-slot
Interface	Ethernet
Controller	Advanced Control System
Warranty	1-Year Limited
Power Requirements	110/220V 3 Amp
Physical Dimensions	17.5"(W) x 17.5"(D) x 9.5"(H) - 23 lbs
Shipping Dimensions	23"(W) x 23"(D) x 19"(H) - 52 lbs
Additional Options	Small Self-Centering Vise